



**a8<sup>+</sup> Label Printer – The Extra Broad.**

Made in Germany.

# Technical details.

Label printer A8+



## 1 Big graphic display

White backlight for optimum readability.

## 2 Ribbon holder

Three-part tightening axles enable quick and easy ribbon exchange.

## 3 Straightforward adjustment

The printhead is pressed down with two sliding toggles. One is mounted to the left label margin, the other is pushed to the right label margin.

## 4 Peripheral connection

Add-on modules such as cutters, external rewinders, present sensors and applicators are easy to connect via the USB peripheral interface. All peripherals are connected to the printer in seconds using two pins and fixed in place with a screw.

## 5 Solid metal housing

Made of die-cast aluminum. All components are mounted on it.

## 6 Roll holder

Available for core diameters from 38 mm. (We provide adapters for core diameters wider than 76 mm for improved label winding). The spring-mounted margin stop ensures constant tension during feeding, thus ensuring a highly precise imprint.

## 7 Only one tool for all maintenance tasks




For exchanging wear parts and connecting peripherals, the Allen key is located ready to hand at the printer.



# All required interfaces.

- 1 RS232C interface.
- 2 USB 2.0 slave interface.
- 3 Ethernet 10/100 Base T interface with TCP/IP.
- 4 Slot for wireless LAN card.
- 5 Two USB master interfaces for connecting an external operation panel, keyboard, scanner or service key.
- 6 Slot for CompactFlash Type I memory card.

## Options

- 
 › Centronics bi-directional interface acc. to IEEE 1284.  
 RS422 / RS485 interface 1,200 up to 230,400 Baud / 8 Bit.  
 The interfaces are plugged into the PC.  
 Connection to the printer via mini USB connection cable.
- 
 › Label selection – I/O box.  
 Up to 16 different labels can be loaded via PLC from a memory card. Operation of four inputs / outputs via Basic Interpreter.
- 
 › cab WLAN card 802.11 b/g.



# Stand-alone operation.

## Printing with a cab printer without a PC.

The layout of the labels is created either using label software or through direct programming via a text editor on the PC. Label formats, fonts and graphic data, serial data and database contents are saved or imported on the CF memory card, USB flash drive or the internal IFFS printer memory.

Only variable data is sent to the printer via keyboard or host computer before being printed out. Data from a barcode scanner or a balance can also be received by the printer.



## Accessories for stand-alone operation



### Memory card

CompactFlash Type I



### Compact keyboard

Connection: USB, number of keys: 86  
 L x W mm: 282 x 132  
 Cherry G84-4100

Device functionality and compliance with CE standards are only warranted by using the accessories provided or recommended by cab.

# Software tools.

## Direct programming with J-Script

The printer language is easy to understand and simple to integrate into your host system. Variable data is linked with host applications. Label design, graphic data and fonts are recorded on the CompactFlash card. The host computer sends only variable data to the printer.

```
J
H 100
O R
S I1;0,0,68,70,100
T 10, 10,0,5,pt20;sample
B 10,20,0,EAN-13,SC2,401234512345
G 8,3,5,0;R:30,9,0,3;0,3
A 1
```

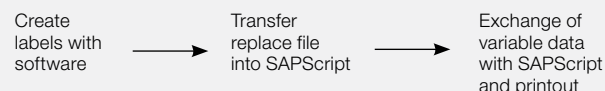
**Job start**  
**Speed (100 mm/s)**  
**Orientation rotated by 180°**  
**Size of label (100x68 mm, gap 2 mm)**  
**Text object/font: Swiss bold, 20 pt**  
**Barcode EAN 13, size SC 2**  
**Graphic, box 30 x 9 mm,**  
**Line strength 0.3 mm**  
**Number of labels (in this example 1)**

## Integration into SAP R/3\*

In cooperation with SAP, cab developed the "replace method" for controlling cab printers quickly and easily from SAP R/3 using SAPScript. As a Silver Level partner in SAP's Printer Vendor Program, cab has access to the SAP development area for optimum printer support in SAP environments.

\* SAP and R/3 are registered trademarks of SAP AG.

## SAP® Printer Vendor Program



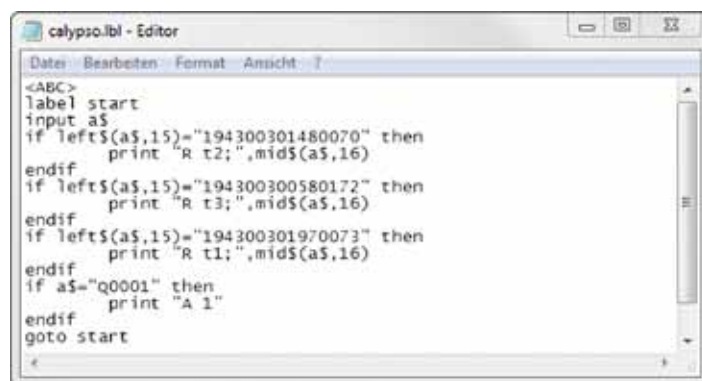
Upload method SAP R/3 note no. 137431

## abc – Basic Compiler

As an integrated element of the firmware, the Basic Compiler enables the printer to process data via BASIC programming before it is sent for print editing. This makes it possible for external printer languages to be replaced or data from other systems, e.g. a PLC or balance, to be transferred so information can be printed in different label formats.

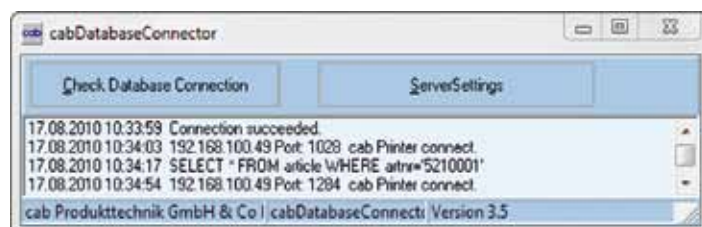
Example of use:

Connection to a balance



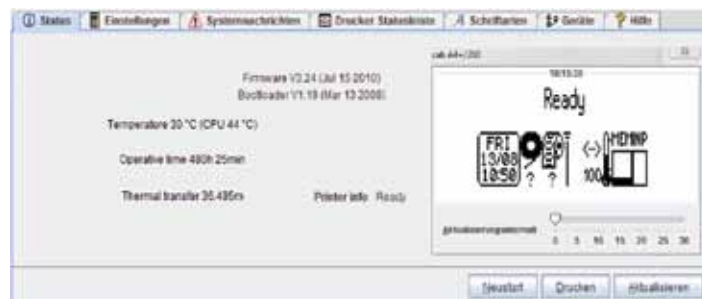
## Database Connector

In stand-alone mode with additional network connection, the Database Connector enables stand-alone printers to access data directly from a central SQL-compatible database and to print it as a label. Data can also be written back to the database or changed during the printing process.



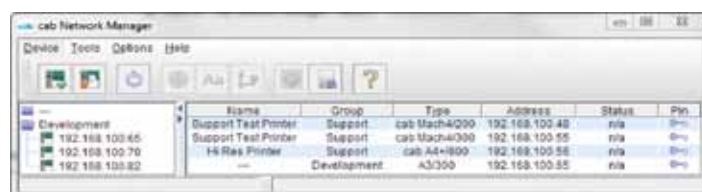
## Printer monitoring with Intranet and Internet

Using standard programs such as the web browser or FTP clients, the integrated HTTP and FTP server enables print monitoring, configuration, firmware updates and memory card administration. Status, warning and error messages are sent to administrators or users as e-mails or SNMP datagrams via SNMP and SMTP clients. A time server is used to synchronize the time and date.



## Administration Network Manager

The cab Network Manager enables the user to control multiple printers across a network simultaneously. It supports monitoring, configuration, firmware updates, memory card administration, file synchronization and PIN administration centrally.





# Printer driver.



## WHQL-certified Windows printer driver for

Windows 2000      Windows Server 2003      Windows 7  
 Windows XP      Windows Server 2008  
 Windows Vista      Windows Server 2008 R2

Our printer drivers are officially certified and signed by Microsoft. They ensure optimum stability on your Windows operating system. The programs Word, Excel, Access, Corel Draw, etc. can be used to design and print labels.



## Apple-Mac OS X® driver

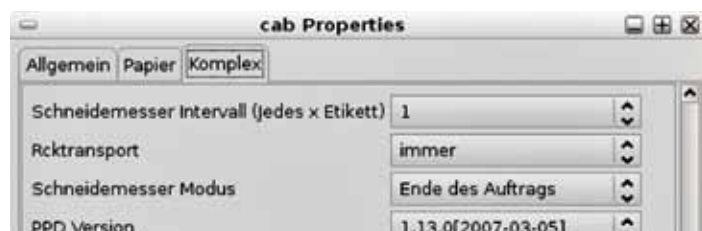
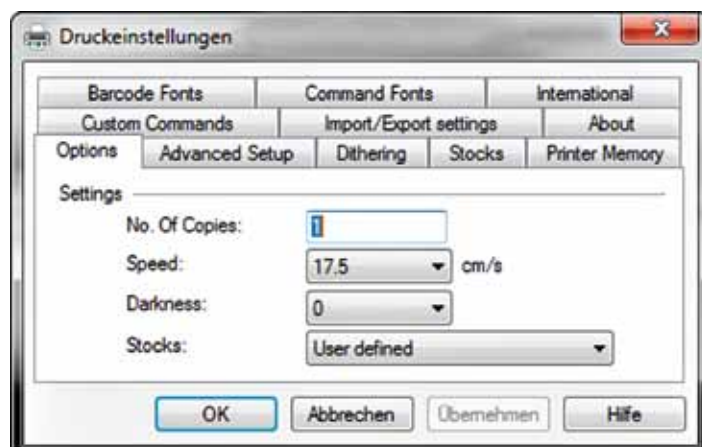
Alternatively, cab offers a CUPS-based printer driver for Mac OS X.



## Linux driver

Alternatively, cab offers a CUPS-based printer driver for Linux.

*Microsoft® is a registered trademark of Microsoft Corporation.  
 Mac OS® is a registered trademark of Apple Computer, Inc*



# Label software.

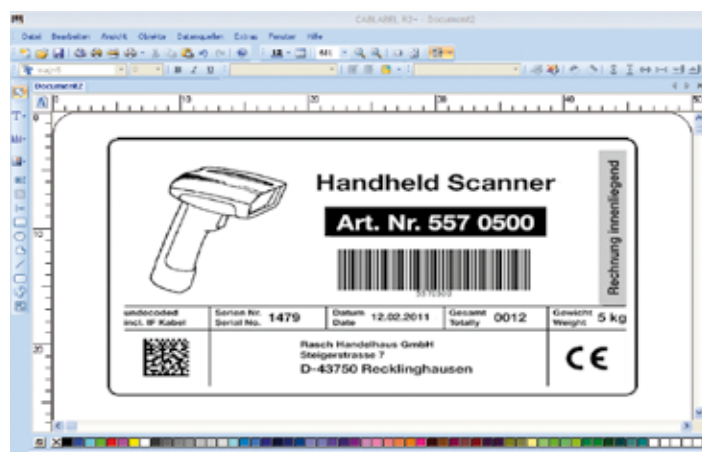
## cablabel R2+

A powerful label software that is available free of charge and specially designed for cab printers and print & apply systems.

Different fonts, barcodes and graphics in variable heights, widths and printing directions can be used to produce the best possible label design.

In addition to the loadable TrueType fonts available with MS Windows, cab printers also offer a large number of internal bitmap and vector fonts. Thanks to the support of the most commonly used codepages, country-specific special characters can also be printed.

High-performance functions make it possible to design and print even complex labels in just a few minutes. cablabel R2+ supports special functions of the cab printers, such as real-time clock, printer counter, stand-alone operation without PC, circular fonts or the printout of the printer data stream in a file. The MDI technology makes it possible to open several labels at the same time and to move objects from one label to another.



cablabel R2+ is available in 24 different languages for the following operating systems:

Windows XP      Windows Server 2003\*  
 Windows Vista      Windows Server 2008\*  
 Windows 7      \* Terminalserver / Citrix are not supported.

## Additional label software

Highest possible variability – other commercially available label software solutions, such as Codesoft, Nicelabel, Easylab, Bartender, Label Matrix or Labelview, support the cab label printers and labeling systems. More information is available on our website.

# Technical data.

■ Standard □ Option

Label printer		A8+
Printhead	Print method	Thermal transfer / Thermal direct
	Print resolution dpi	300
	Print speed up to mm/s	30, 40, 50, 75, 100, 125, 150
	Print width mm	216
Material	Labels, continuous rolls or fan-folded	Paper, cardboard, textiles, plastics such as PET, PE, PP, PVC, PU, acrylate, PI
	Material thickness mm / weight g/m <sup>2</sup>	0.05 – 0.8 / 60 – 300
	Label width <sup>1)</sup> mm	50 – 220
	Width of liner or continuous material mm	50 – 235
	Label height <sup>1)</sup> without back feed from mm	10
	up to mm	2000
	Media roll: Total diameter up to mm	205
Ribbon	Core diameter mm	38 – 100
	Winding direction	Outside or inside
	Ink	Outside or inside
	Roll diameter up to mm	72
	Core diameter mm	25
Internal rewriter (only peel-off version)	Ribbon length variable up to m	360
	Width <sup>2)</sup> up to mm	220
	Total diameter up to bis mm	142
	Core diameter mm	38.1
Printer dimensions	Winding direction	Only outside
	Height x Depth mm	274 x 446
	Width mm	352
Label sensor	Weight kg	15
	Gap sensor	For leading edge of the label or punching marks and end of material
	Reflective sensor from the bottom / from the top	For printing marks
	Distance to locating edge mm	5 – 53
Electronics	Processor high speed 32 Bit ColdFire / clock rate MHz	266
	RAM MB	64
	Memory IFFS MB Flash	8
	Slot for CompactFlash Type I memory card	■
	Slot for wireless LAN card	■
	Battery buffer for	Real-time clock, printout of time and date, data storage on shut-down
	Warning signal	Acoustic signal in case of error
Interfaces	Centronics bi-directional acc. to IEEE 1284	□
	RS232 C 1,200 up to 230,400 Baud / 8 Bit	■
	USB 2.0 high speed slave for PC connection	■
	Ethernet 10/100 Base T, LPD, RawIP printing, ftp printing, DHCP, HTTP, FTP, SMTP, SNMP, TIME, Zeroconf, mDNS, SOAP	■
	RS422, RS485 1,200 up to 230,400 Baud / 8 Bit	□
	Peripheral connection	■
	WLAN card 802.11 b/g WEP / WPA PSK (TKIP)	□
	2x USB master for	External operation panel, keyboard, scanner, service key, USB flash drive
Operating data	Power supply	100 – 240 V ~ 50 / 60 Hz, PFC
	Power consumption	Max. 300 W
	Temperature / humidity: Operation	+5 – 40°C / 10 – 85% not condensing
	Storage	+0 – 60°C / 20 – 85% not condensing
	Transport	-25 – 60°C / 20 – 85% not condensing
Approvals		CE, FCC class A, CB, CCC, UL

<sup>1)</sup> Limitations may apply to small labels, thin materials or strong adhesives. Critical materials or applications must be tested and approved.

<sup>2)</sup> The ribbon should be roughly the same width as the label in order to avoid folding.



With innovative technology for better climate protection  
Energy saving – Environmentally friendly

Label printer		A8+	
Operation panel	Buttons / LED display	Pause, Feed, Cancel, Menu, Enter, 4 x Cursor	
	LCD graphic display	Width 60 mm, height 40 mm, text 4 lines, ca. 20 characters per line	
Settings		Time, date, digital or analog clock 25 language settings System settings, print parameters, interfaces, security	
Monitoring	Stop printing if:	End of ribbon End of labels Printhead open	
	On the display	Data reception Clock WLAN field intensity Date sheet Ethernet status abc Debug	Used memory Input buffer Temperature of printhead Remaining quantity of ribbon Access to memory card
Test routines	System diagnosis	When switched on, incl. printhead testing	
	Short status, status print	Font list, device list, WLAN status, label profile, test grid, monitor mode, PPP status	
	Status reports	Extensive status printout with information about settings, e.g. print length counter, runtime counter, etc. Request of machine status via software commands. Detailed status messages on the display, e.g. network error – no link, barcode error, etc.	
Fonts	Font types	5 Bitmap fonts incl. OCR-A, OCR-B and 3 Vector fonts Swiss 721, Swiss 721 Bold and Monospace 821 available internally, loadable TrueType fonts. Thai and Chinese (simplified Chinese) available as options.	
	Character sets	Windows 1250 up to 1257, DOS 437, 737, 775, 850, 852, 857, 862, 864, 866, 869, EBC DIC 500, ISO 8859-1 to -10 and -13 up to -16, WinOEM 720, UTF-8, Macintosh Roman, DEC MCS, KOI8-R. All West and East European Latin, Cyrillic, Greek, Hebrew and Arabic characters are supported. Thai and Chinese available as options.	
	Bitmap fonts	Size of width and height 1 – 3 mm Zoom 2 – 10 Orientation 0°, 90°, 180°, 270°	
	Vector / TrueType fonts	Size of width and height 0.9 – 128 mm Variable zoom, Orientation 360° in steps of 1°	
	Font formats	Bold, italic, underlined, outline, negative, gray, vertical, depending on character fonts	
	Font width	Variable	
Graphics	Graphic elements	Line, arrow, box, circle, ellipse, filled and filled with fading	
	Graphic formats	PCX, IMG, BMP, TIF, MAC, GIF, PNG	
Barcodes	Linear barcodes	Code 39, Code 93 Code 39 Full ASCII Code 128 A, B, C EAN 8, 13 EAN / UCC 128 EAN / UPC Appendix 2 EAN / UPC Appendix 5 FIM HIBC	Interleaved 2 / 5 Ident- and lead code of Deutsche Post AG Codabar JAN 8, 13 MSI Plessey Postnet RSS 14 UPC A, E, EO
	2D codes	Aztec, Codablock F, Data Matrix, PDF 417, Micro PDF 417, UPS Maxicode, QR-Code, RSS 14 truncated, limited, stacked and stacked omnidirectional, EAN-Datamatrix, GS1 Data Bar All codes variable in height, module width and ratio. Orientation 0°, 90°, 180°, 270°. Optionally with check digit, printed characters and start/stop code, depending on code type.	
Software	Programming	J-Script direct programming abc – Basic Compiler Database Connector	■ ■ □
	System diagnosis / administration	Printer monitoring Network Manager	■ □
	Label software	cablabel R2+ Codesoft, NiceLabel, Easylabel Bartender, Label Matrix, Labelview	■ ○□ ○
	Windows driver certified	32/64 bit for Windows 2000 Windows XP Windows Vista Windows 7	■
	Mac driver	OS X printer driver from version 10.4	■
	Linux driver	Tested with Suse 9.0, CUPS-based	■
	Stand-alone operation		■

For current data, please go to [www.cab.de](http://www.cab.de)

## Accessories for basic devices.



### Cutter

The cutter is used to cut paper, pressure sensitive labels, cardboard, textiles, synthetics or heat shrink tubes.

	Cutter CU8
Material width up to mm	232
Weight of material gr/m <sup>2</sup> / cardboard	60 – 500
Material thickness mm	0.05 – 0.8
Cutting length mm	> 5
Gap height up to mm	2.5
Cuts/min	110
Stop print job if	Final position not reached



### ER1/2/3 external rewinder for direct printer connection

The rewinder is screwed directly onto the printer. Labels can be wound either inside or outside. Electronic control of the swing arm ensures smooth and tight winding.



### ER4/6/8 external rewinder with built-in power supply

The rewinder can be attached to almost any third-party printer. All other technical data is the same as for the rewinder ER1/2/3.



### EU4/6/8 external unwinder

It enables smooth label feed for heavy rolls. The unwinder works both with inside and outside wound labels.



### External panel

If the panel is no longer accessible, e. g. after installation within a facility, an external panel can be installed. There are additional slots for a CF memory card Type I and a USB master interface.



### PS7 pause adapter for basic and dispensing devices

The print job is stopped by the pause signal.  
The label being printed is finished first, e. g. by using a label loop.  
Inputs: Pause, external error  
Outputs: No print job, printer not ready, print job active

All examples for accessories are pictured with the thermal label printer A4<sup>+</sup>.

	External rewinder		External unwinder
	ER3 / 210	ER8 / 300	EU8 / 300
Material width up to mm	235	235	235
Roll Ø max. mm	205	300	300
Core Ø mm	40 / 76	40 / 76	40 / 76
Operating voltage	From label printer	100 – 240 V ~ 50 / 60 Hz	–
Label winding		Outside or inside	



# Delivery program label printer.

	Part No.	Hardware	dpi
	<b>5954517.101</b>	Label printer A8+	300
<b>Scope of delivery:</b>			
	Label printer, Power cable Type E+F, length 1.8 m Connecting cable USB, length 1.8 m Operation manual de/en  <b>DVD:</b> Operating manual in 21 languages, Configuration manual de/en/fr, Service manual de/en, Spare part list de/en, Programming manual en, Windows printer driver 32/64 bit in 19 languages for Windows 2000                      Server 2003 Windows XP                        Server 2008 Windows Vista                     Server 2008 R2 Windows 7 MAC OS X driver de/en/fr, Linux driver de/en/fr, Label software cablabel R2+ in 24 languages, Database Connector en		
	Part No.	Consumables	
	<b>5954107.001</b>	Printhead 8 / 300	
	<b>5954103.001</b>	Print roller DR8	
	Part No.	Accessories	
	<b>5948002</b>	Cutter CU8	
	<b>5959622</b>	Adapter 100	
	<b>5945802</b>	External rewinder ER3 / 210	
	<b>5945804</b>	External rewinder ER6 / 300	
	<b>5945806</b>	External unwinder EU8 / 300	
	<b>5948170</b>	Connection set for ER/EU	
	<b>5946146.001</b>	Pause adapter PS7	

	Part No.	Accessories
	<b>5954380.001</b>	External operation panel
	<b>5901630</b>	Compact keyboard USB Cherry G84-4100
	<b>5561043</b>	Memory card CompactFlash Type I
	Part No.	Interfaces
	<b>5954200</b> <b>5954201</b>	Centronics interface RS422 / RS485 interface
	<b>5954191</b>	Label selection – I/O-Box
	<b>5561041</b>	WLAN-card 802.11 b/g
	Part No.	Connecting cable
	<b>5550818</b>	Cable RS232 C 9/9-pin, length 3 m
	<b>5918008</b>	Patch cable KAT 5e, 3 m gray
	Part No.	Software
	<b>DL 40100</b>	Database Connector license
	<b>5580215</b>	Administration Network Manager
	In Scope of delivery	Label software cablabel R2+
	On request	Codesoft, Nice Label, Easylab
	<b>9008486</b>	Programming manual English, printed copy

# The cab delivery program.

EOS 1/4 label printer



MACH4 label printer



A+ series label printers



XD4 label printer



XC series label printer



Hermes+ Print and Apply



PX series print module



FL series laser marking systems



Laser safety housing



Label software



VS 120 label dispenser



Labels / ribbons

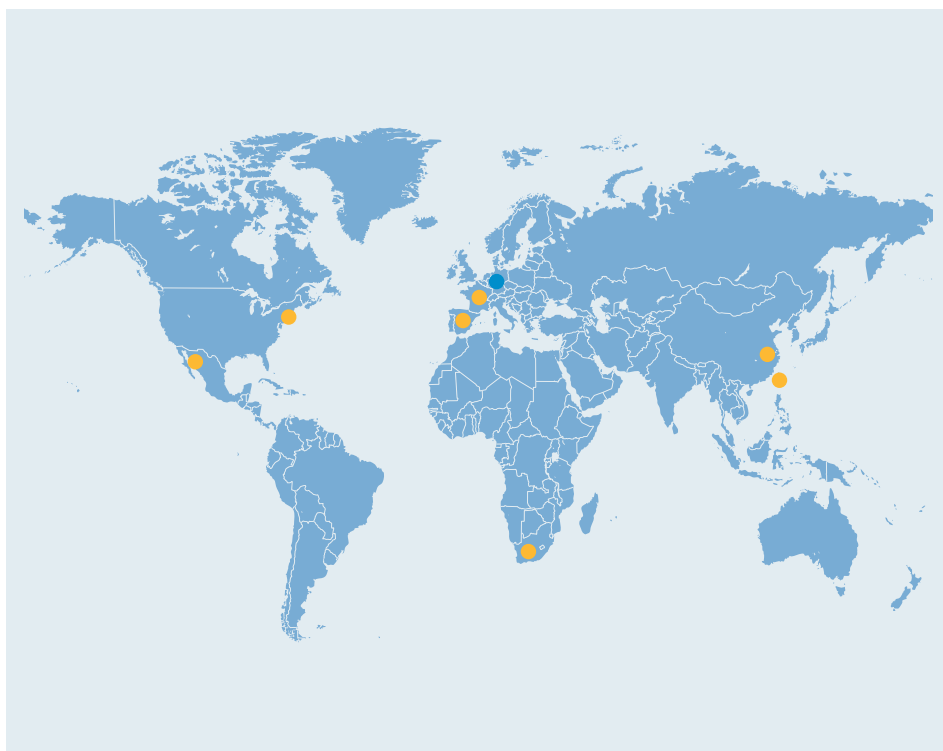


● Headquarters in Germany

● cab subsidiaries

350 distribution partners  
in more than 80 countries.

*cab is represented in every active  
commercial center - worldwide.*



[www.cab.de](http://www.cab.de)

#### Germany

cab Produkttechnik  
GmbH & Co KG  
Postfach 1904  
76007 Karlsruhe  
Wilhelm-Schickard-Str. 14  
76131 Karlsruhe  
Telefon +49 721 6626-0  
Telefax +49 721 6626-249  
[www.cab.de](http://www.cab.de)  
[info@cab.de](mailto:info@cab.de)

*Representatives in other  
countries on request.*

#### France

cab technologies s.a.r.l.  
67350 Niedermodern  
Téléphone +33 388 722 501  
[www.cab.de/fr](http://www.cab.de/fr)  
[info.fr@cab.de](mailto:info.fr@cab.de)

#### Spain

cab España S.L.  
08304 Mataró (Barcelona)  
Teléfono +34 937 414 605  
[www.cab.de/es](http://www.cab.de/es)  
[info.es@cab.de](mailto:info.es@cab.de)

#### USA

cab Technology Inc.  
Tyngsboro MA, 01879  
Phone +1 978 649 0293  
[www.cab.de/us](http://www.cab.de/us)  
[info.us@cab.de](mailto:info.us@cab.de)

#### South Africa

cab Technology (Pty.) Ltd.  
2125 Randburg  
Phone +27 11-886-3580  
[www.cab.de/za](http://www.cab.de/za)  
[info.za@cab.de](mailto:info.za@cab.de)

#### Asia 亚洲

cab Technology Co, Ltd.  
**希爱比科技股份有限公司**  
Junghe, Taipei, Taiwan  
Phone +886 2 8227 3966  
[www.cab.de/tw](http://www.cab.de/tw)  
[info.asia@cab.de](mailto:info.asia@cab.de)

#### China 中国

cab (Shanghai) Trading Co., Ltd  
**铠博(上海)贸易有限公司**  
Phone +86 21 6236-3161  
[www.cab.de/cn](http://www.cab.de/cn)  
[info.cn@cab.de](mailto:info.cn@cab.de)

*This documentation and any translations hereof are the property of cab GmbH & Co KG.*

*The replication, processing, reproduction or distribution in whole or in parts requires our prior written consent. © Copyright by cab*

*All delivery, design and technical specifications are compiled to the best of our current knowledge and are subject to change without prior notice.*